

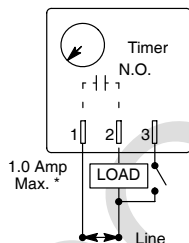
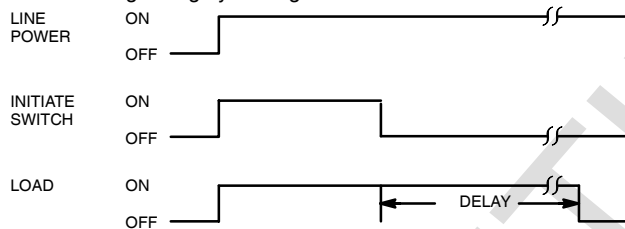
## Features

- 2 x 2 Industry Standard Package
- 19–288 Volts AC Operation
- .1 to 5 Minutes Timing Range
- ±2% Repeat Accuracy
- Transient Protected
- CMOS Digital Timing
- .250" Quick Connect Terminals
- Encapsulated Construction



## OPERATION

**DELAY ON RELEASE**– Input voltage must be applied continuously to operate the internal relay. When the control switch is closed, the relay energizes. When the control switch is opened, timing begins. When timing is complete, the relay will deenergize. Time may be reset to zero during timing by closing the control switch.



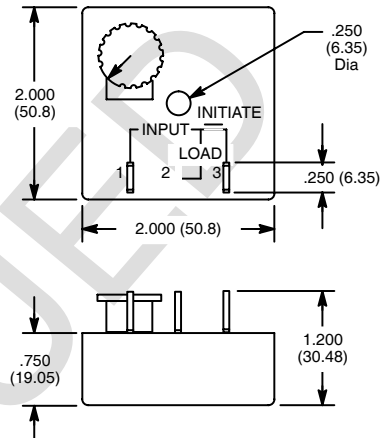
\* For higher current applications connect a switching relay in series with timer in place of load.

# RLY250



**Knob Adjustable, AC, Delay on Release, Solid State, Universal Cube Timer.**

## D70



## Ratings and Specifications

**Input Operating Voltage Range (Line):** 19–288 V AC

**AC Operating Frequency:** 50/60 Hz

**Switch Configuration:** Solid State, SPST

**Switching Current (Load):** 40mA Amp min., 1 Amp max.

**Timing Adjustment Range:** 0.1 to 5 minutes

**Repeat Accuracy:** ±2%

**Reset Time:** 100ms Max

**Initiate Switch Closure Time:** 1.0 seconds min.

**Expected Life (Electrical):** 100,000,000 operations @ rated load

**Operating Temperature:** –20° to +65°C

**Storage Temperature:** –40° to +85°C

**Dielectric Breakdown Voltage Between All Elements:** 1500V<sub>rms</sub>

**Transient Protection:** 1500 V for 150µs

**Mounting:** One #8 or #10 Screw